

Temperature measurement in **EMBRYOSCOPE** incubators.



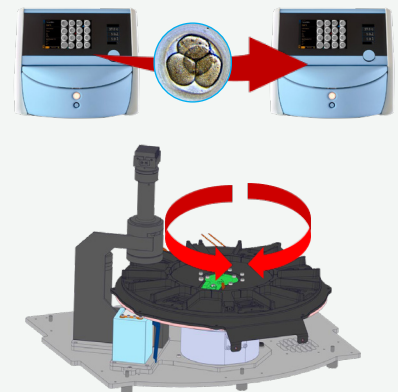
Scope of the document:

Here, we suggest a method of using **LEO** to measure the temperature in **EMBRYOSCOPE** incubators.



PRECAUTIONS:

- Please be cautious with your cultured embryos, considering that during the measurement procedure a temperature probe will be inserted into the chamber, and that there will be no pictures taken.
- During normal operation, the incubator rotates the culture dish holder disk in order to take microscope pictures of embryos in all dishes. But when taking a temperature measurement, you need to stop the disk from rotating in order to place the sensor.
- Read the manuals for the incubator and LEO for usage and safety details.



GENERAL CONSIDERATIONS:



Evaluate the need for chamber cleaning and disinfection after working on the incubator.



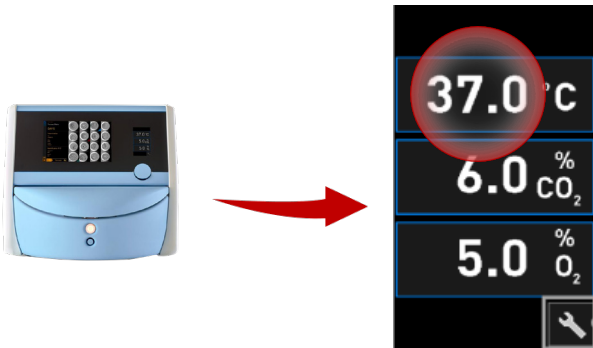
As good practice, it is recommended to have LEO charged before use, and not to charge it during use.



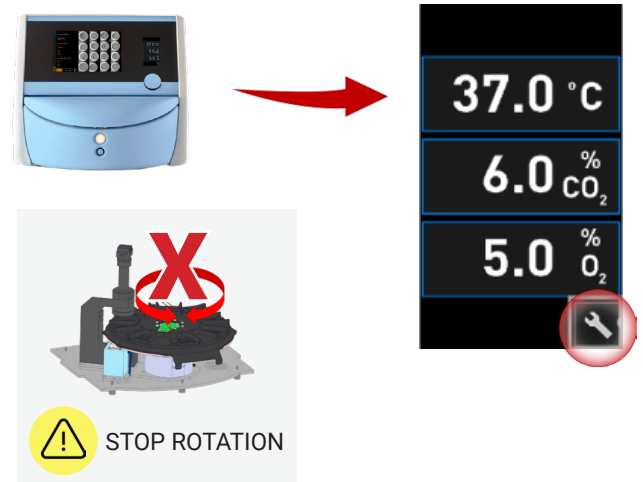
Always read the manual of the devices.

MEASURING PROCEDURE:

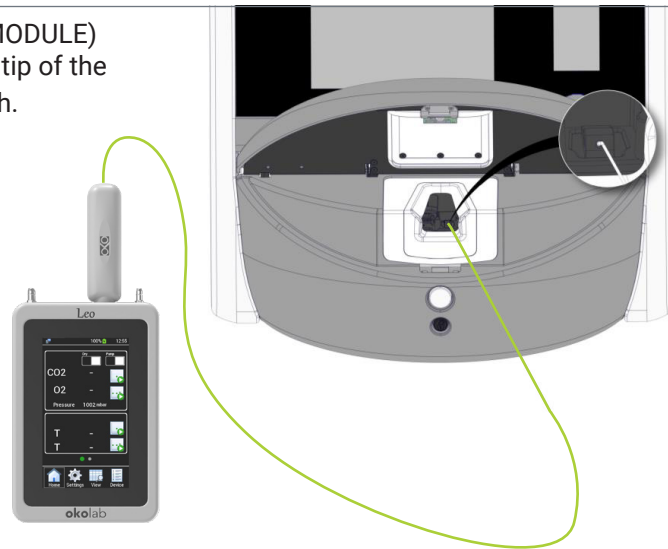
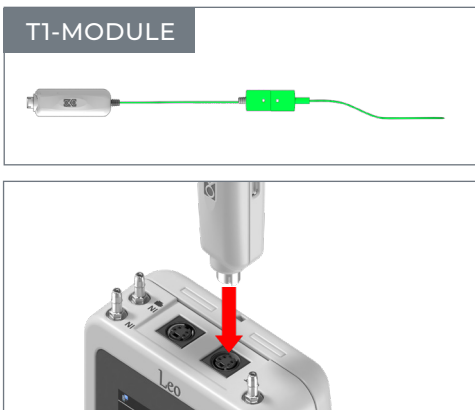
STEP 1 If you prefer, set **EMBRYOSCOPE** to **37.0°C**.



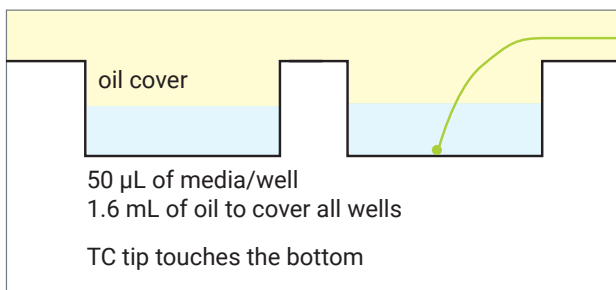
STEP 2 Set **EMBRYOSCOPE** to **Validation Mode**.



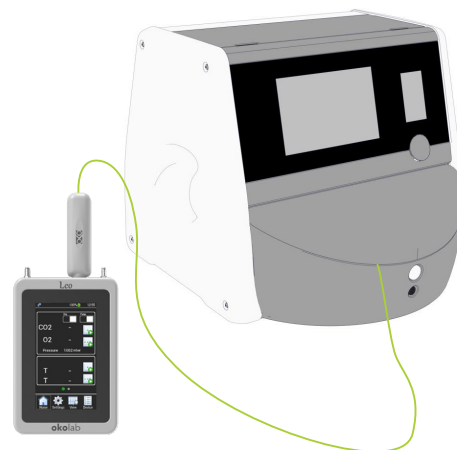
STEP 3 Place **LEO's temperature probe (T1-MODULE)** inside a culture dish well, so that the tip of the sensor touches the bottom of the dish.



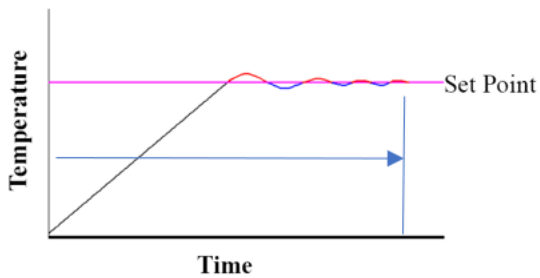
STEP 4 Fix the cable of **LEO's probe** so that it will not move from its position.




STEP 5 Close the lid of **EMBRYOSCOPE**.




STEP 6 Give enough time for **EMBRYOSCOPE** and the media to thermally stabilize.



 If the temperature on **LEO's** display is stable for a period of 10 minutes, proceed to Step 7.

STEP 7 Take the reading from **LEO**.

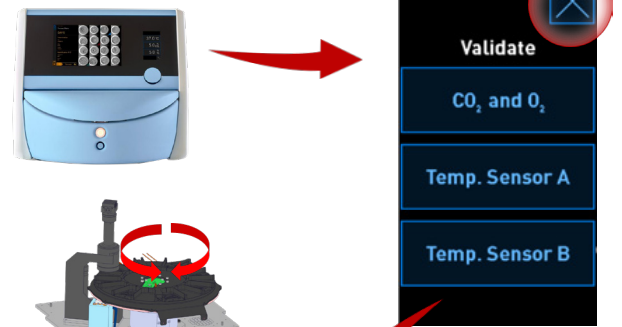


 Read LEO User Manual for details.

STEP 8 Remove **LEO's** temperature probe from **EMBRYOSCOPE**.



STEP 9 Exit Validation Mode by pressing  on **EMBRYOSCOPE**.



 **START ROTATION**